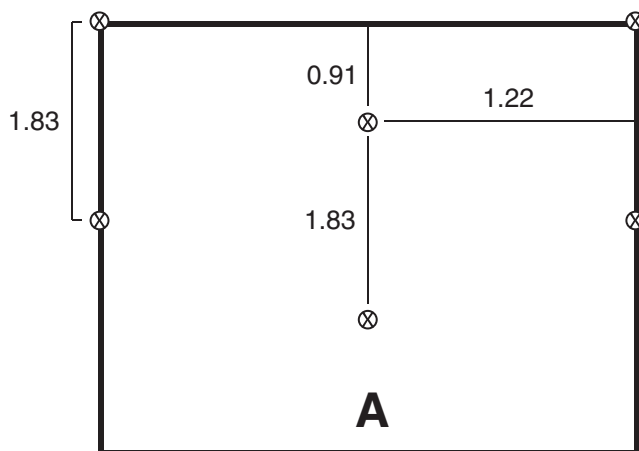


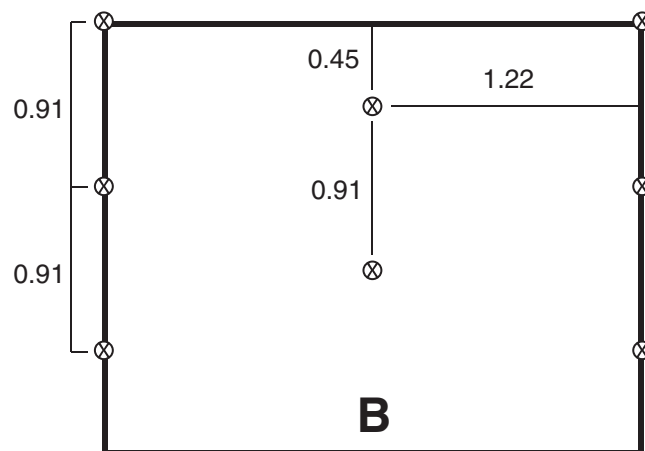
## W300 Staple Pattern Guide

Application	Slope			Channel
	≤ 4:1	≤ 3:1	≤ 1:1	≤ 144 Pa (3.0 lb/ft <sup>2</sup> ) Shear Stress ≤ 3.2 m/sec (10.5 ft/sec) Velocity
Staple Pattern	A	B	C	C

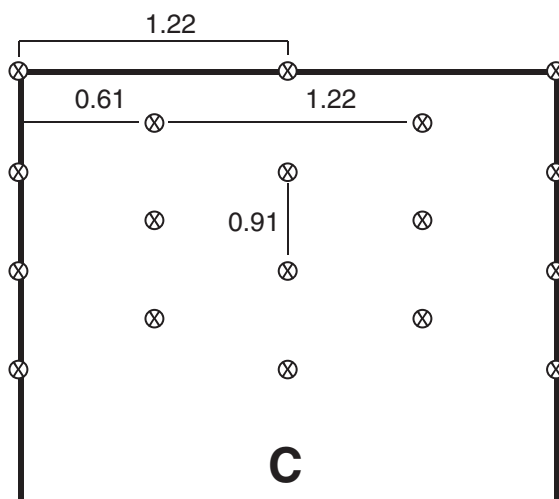
⊗ = Staple Placement



0.72 Staples/m<sup>2</sup>



1.32 Staples/m<sup>2</sup>



2.28 Staples/m<sup>2</sup>

### Notes:

1. Recommended staples are a minimum 4" biodegradable staple or 6" wire for cohesive soils and 6" biodegradable staple or 8" wire for non-cohesive soils.
2. For best results insert staples so heads are parallel to the flow of water.
3. Not to scale: Dimensions in metres unless otherwise noted.
4. Adjust staple pattern so staples are placed in critical channel points (e.g. slope interface, channel bottom) as illustrated below.

Critical channel points are circled.

