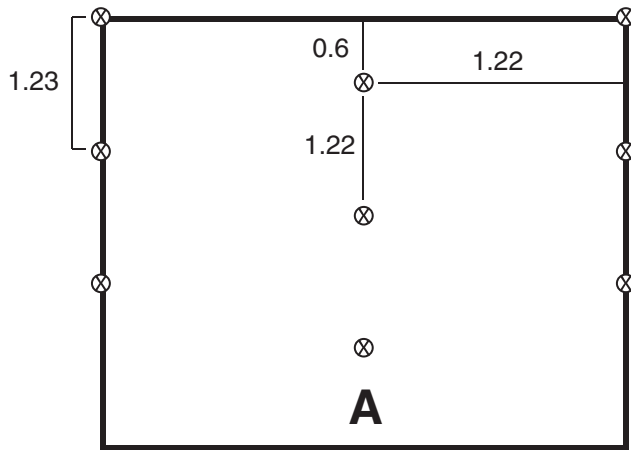


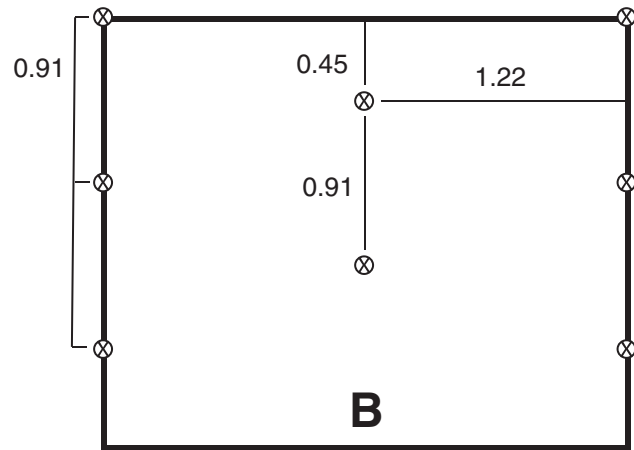
S200/S200B Staple Pattern Guide

Application	Slope			Channel
	≤ 4:1	≤ 3:1	≤ 2:1	≤ 84 Pa (1.75 lb/ft ²) Shear Stress ≤ 2.1 m/sec (7.0 ft/sec) Velocity
Staple Pattern	A	B	C	C

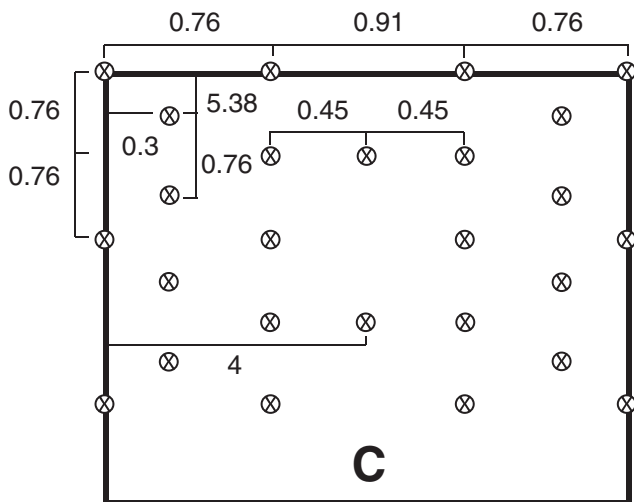
⊗ = Staple Placement



1.08 Staples/m²



1.32 Staples/m²



2.98 Staples/m²

Notes:

1. Recommended staples are a minimum 4" biodegradable staple or 6" wire for cohesive soils and 6" biodegradable staple or 8" wire for non-cohesive soils.
2. For best results insert staples so heads are parallel to the flow of water.
3. Not to scale: Dimensions in metres unless otherwise noted.
4. Adjust staple pattern so staples are placed in critical channel points (e.g. slope interface, channel bottom) as illustrated below:

Critical channel points are circled.

