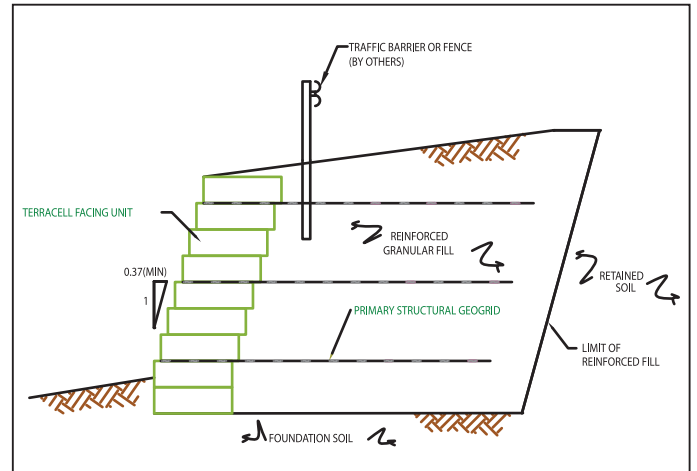


TerraSlope® Web

TerraSlope Web can be built at slope angles up to 70 degrees. TerraSlope Web incorporates the Terraweb cellular confinement system as a facing that allows for construction at variable angles. Topsoil can be placed in outer cells of the facing to allow for a fully vegetated finish. The TerraSlope Web system is fast and easy to install.



Typical Cross Section

