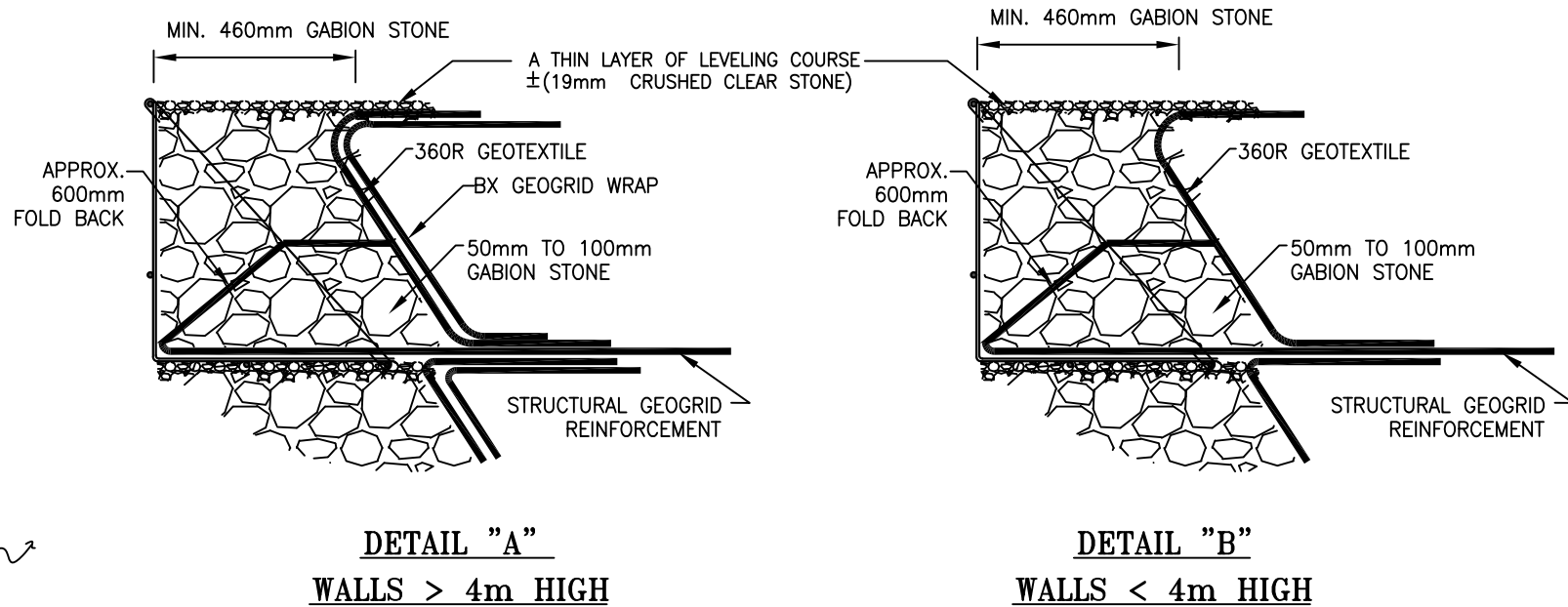
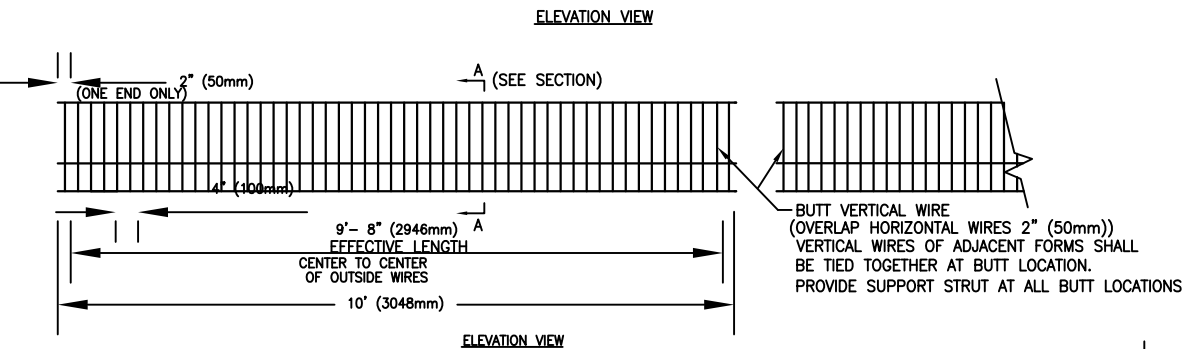


STONE FACED TERRASTEEP WALL TYP SECTION
NOT TO SCALE



DETAIL "A"
WALLS > 4m HIGH

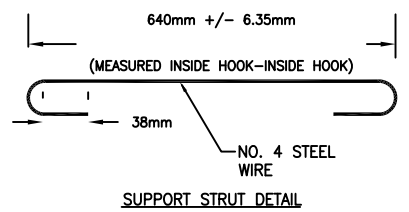
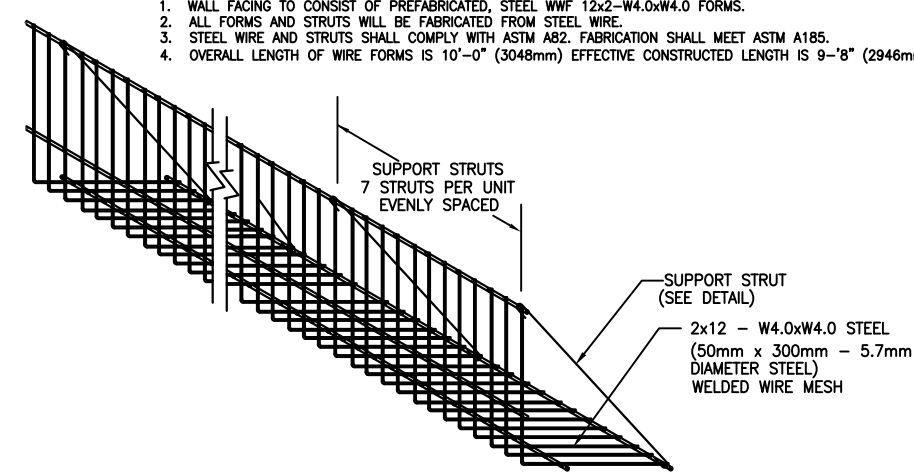
DETAIL "B"
WALLS < 4m HIGH



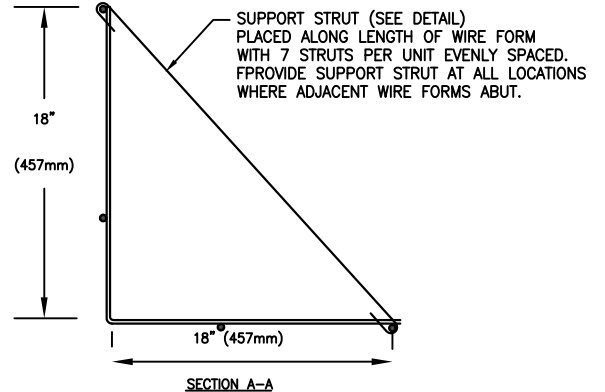
ELEVATION VIEW

ELEVATION VIEW

- NOTES:**
1. WALL FACING TO CONSIST OF PREFABRICATED, STEEL WWF 12x2-W4.0xW4.0 FORMS.
 2. ALL FORMS AND STRUTS WILL BE FABRICATED FROM STEEL WIRE.
 3. STEEL WIRE AND STRUTS SHALL COMPLY WITH ASTM A82. FABRICATION SHALL MEET ASTM A185.
 4. OVERALL LENGTH OF WIRE FORMS IS 10'-0" (3048mm) EFFECTIVE CONSTRUCTED LENGTH IS 9'-8" (2946mm).



SUPPORT STRUT DETAIL



SECTION A-A

TYPICAL CONFIGURATION OF TERRASTEEP 90 FOR INFORMATION ONLY

THIS DESIGN IS BASED UPON SPECIFIC PROPERTIES OF TERRAFIX PRODUCTS (GEOGRIDS, DRAINAGE COMPOSITES AND EROSION MEDIA), WHICH ARE PROPRIETARY TO TERRAFIX GEOSYNTHETICS INC., 455 HORNER AVENUE, TORONTO, ONTARIO, M8W 4W9. ANY SUBSTITUTION OF THE SPECIFIED PRODUCTS WILL INVALIDATE THIS DESIGN. THIS DRAWING IS BEING FURNISHED FOR USE ON THIS SPECIFIC PROJECT ONLY. ANY PARTY ACCEPTING THIS DOCUMENT DOES SO IN CONFIDENCE AND AGREES THAT IT SHALL NOT BE DUPLICATED WHOLE OR IN PART, NOR DISCLOSED TO OTHERS, WITHOUT THE CONSENT OF TERRAFIX GEOSYNTHETICS INC.