

Newtonville, ON – SWM Pond

INSTALLATION DATE

Winter 2011

PROJECT ENGINEERS

The Sernas Group

SITE SERVICING CONTRACTOR

Behan Construction Ltd.

CHALLENGE

Hard armour erosion protection was required to line the spillway of a new stormwater management pond.

SOLUTION

FLEXICRETE®, an articulated concrete block solution, was selected and installed for this project.

PROJECT OVERVIEW

441sqm (51 panels) of FLEXICRETE® were installed efficiently with the use of a custom-made spreader bar, provided by Terrafix, and an excavator. All panels were laid out in a few days. Due to its articulating capabilities, FLEXICRETE® was able to match the contours of the spillway.

FLEXICRETE® is a system of solid concrete blocks connected together to form continuous inter-connected areas. Concrete strength used is 30MPa or higher in accordance with Canadian Standards CSA-A23. Galvanized mesh reinforcement wires (8 gauge) are cast into the blocks.

The standard block size is 400mm × 400mm × 80mm in panels 3.6 metre long × 2.4 metre wide. A standard block weighs 27 kg. Panel weight is 168 kg/m². A standard 3.6 metre × 2.4 metre panel, weighs 1.45 tonnes.





Spreader bar



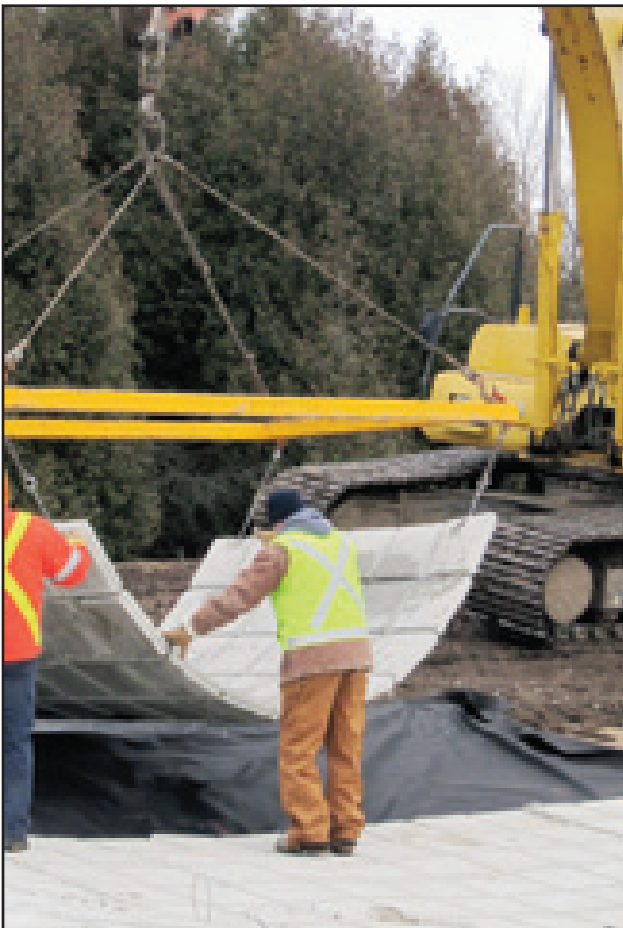
Lifting panels off of flat bed truck



Non-woven geotextile laid over compacted base



Lifting a panel with the spreader bar



Placing a panel over the geotextile



Final installation

What's new and exciting at Terrafix Geosynthetics?



We're going GREEN! Literally!

Terrafix now offers a new and exciting solution for your stormwater management needs. Our new subsurface retention/detention system consists of chambers fabricated by Triton™ Stormwater Solutions. Chambers are fabricated from earth-friendly soy resin-based polymer. Triton™ produces chambers that are significantly lighter, substantially larger and much stronger than conventional chambers. Please visit www.terrafixgeo.com and www.Tritonsws.com for more details.

Lunch and Learn



Terrafix offers a project specific approach to solving your erosion & sediment and stormwater management solutions.

We offer detailed assistance from the design stage to onsite support. With a professional staff of experienced engineers and specialists, we are available to assist designers and clients in selecting cost effective solutions.

If you are interested in an office Lunch & Learn, please contact our office at (416)674-0363, ext. 241.

Additional Information

For stormwater and erosion control challenges, please call J.J. Breede, P.Eng. at 416-674-0363, ext. 241 or e-mail at jjbreede@terrafixgeo.com



At Terrafix, we provide powerful new technologies in geosynthetic products and services for construction and environmental applications. These new technologies can save you installation time and money.... and we can prove it!

Terrafix offers a turnkey approach to solving your environmental problems. From engineering to construction, our team of professionals are committed to providing the most advanced engineering solutions to today's environmental challenges.

We have technical experts available every day to answer your technical questions and to give you engineering solutions in which you can have confidence.

Because we carry the complete line of geosynthetic products you can count on us to have inventory available when you need it. And, many of our products can be custom cut and fabricated to fit the requirements of your project which will save you labour costs, installation time and minimize waste. Ask us about it!

Terrafix has been in business for almost 40 years. We have a track record of success and reliability. You can be certain that we will be here when you need us.

Call on Terrafix for all your geosynthetic product or service applications!